

## **KWP2000 PLUS ECU Flasher**

### **OPERATION INSTRUCTIONS:**

#### Install driver:

- Install the driver package to your notebook/pc.
- Connect the KWP2000 PLUS Flasher to a free USB port.
- At the window, point to the folder where you installed the driver package.
- Reboot.

#### How to READ data from a supported ECU:

- Connect the KWP2000 PLUS ECU Flasher to computer USB port and to the diagnostic port of the car
- Start the communication software in the computer.
- Turn ignition key to "ON" position. (Do not crank or start the engine).
- Select the ECU type you want to read/write from the given list.
- Select additional options (if needed)
- Click the READ button to read out the original data (where supported).
- Save the file to the Hard Disk, Edit or Forward it another folder

#### How to WRITE data to a supported ECU:

- Connect the KWP2000 PLUS ECU Flasher to computer USB port and to the diagnostic port of the car
- Start the communication software in the computer.
- Turn ignition key to "ON" position. (Do not crank or start the engine).
- Select the ECU type you want to read/write from the given list.
- Select additional options (if needed).
- Click the WRITE button and select the file you want to write
- Follow the instructions on screen
- Switch the ignition key to "OFF" position and wait for 10 seconds before starting the engine again.

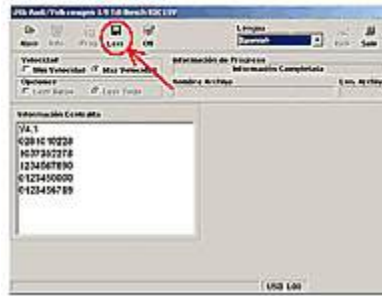
### **Reading the ECU EEPROM chip**



First choose the vehicle and type of the engine's ecu you want to read/write from the given list. If you have any doubt about the type of ECU, you can verify it from the program.



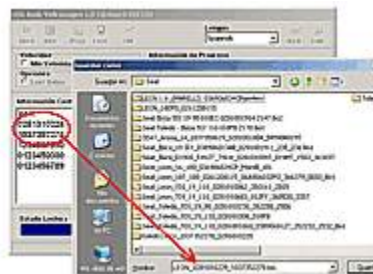
When the dialogue window appears just click on INFO tab and wait for the program to communicate with the ECU.



A moment later, the information about the ECU type will be shown. Just click on “READ” tab to assure that you will have a copy of the original file (in case there is some problem later).



When the program starts reading the ECU’s chip, DO NOT INTERRUPT the process at this moment.

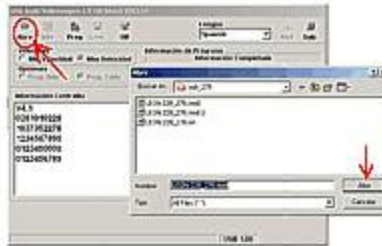


Choose where you want to save the original file and name it. To simplify your work, name it same as the numbers that appear in the window display on “Information of the ECU”.

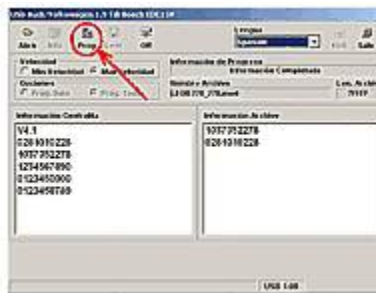


Now the program will prompt you to turn the ignition key to “OFF” position. Do as instructed and then click the “OK” button.

## Writing into the ECU EEPROM chip



Choose the vehicle and type of the ECU (as in the "READ" process) click on INFO tab. OPEN the file prepared for your vehicle or ECU type.



From the display, on the right window you will see the reference of the ECU that corresponds to the open file. To confirm that this information matches with our ECU type. Verify the numbers in both windows are the same just to be on the save side.



If you are absolutely sure that everything you did is correct. Click on PROG tab, the system will now erase the ECU flash memory and program it with the new file. Please DO NOT INTERRUPT during this process.

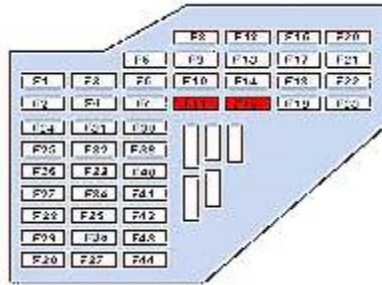


When it had finished writing, just turn the ignition key to "OFF" position and then confirm by clicking the OK button.

Wait for 10 seconds and it is done! Now you can enjoy the new ECU program.

**NOTE:**

For some cases, VAG cars (AUDI, VOLKSWAGEN, SEAT AND SKODA) before attempting to flash the ECU chip, the instruments panel must be de-activated. Open the fuse box cover; remove the 5A fuses as indicated in red (refer figure below). With the instruments panel power cut off you can try to access the ECU.



Inside view of the Fuse Box

**Compatibility:**

Supported Car Models and their ECU:

<u>ECU FAMILY</u>	<u>READ ORIGINAL FILE</u>	<u>PROGRAM TUNED FILE</u>
ALFA ROMEO JTS MED 7.1.1 EURO 3 (Boot Mode)	YES	YES
ALFA / FIAT BOSCH M 1.5.5 Euro2	NO	YES
ALFA / FIAT BOSCH ME3x - ME7x	YES	YES
ALFA / FIAT BOSCH ME2.1 EURO 2	NO	YES
ALFA / FIAT BOSCH EDC15C Euro2	YES	YES
ALFA / FIAT BOSCH EDC15C-7 Euro 3 Fase 1/2	YES	YES
AUDI/VOLKSWAGEN BOSCH EDC15x DIESEL	YES	YES
AUDI/VOLKSWAGEN BOSCH ME7X (Boot Mode)	YES	YES
BMW SIEMENS MS 41	YES	YES
BMW 2.0 D EDC15C	YES	YES
BMW 3.0 D EDC15	YES	YES
BMW BOSCH MOTRONIC M5.2.1B	YES	YES
BMW SIEMENS MS42	YES	YES
BMW SIEMENS MS43	YES	YES

CHRYSLER BOSCH EDC15C2	YES	YES
CITROEN / PEUGEOT BOSCH EDC15C2	YES	YES
CITROEN / PEUGEOT BOSCH ME 7.4.4	YES	YES
CITROEN / PEUGEOT/FIAT MARELLI MM48P	YES	YES
CITROEN / PEUGEOT BOSCH AS41	YES	YES
FERRARI 360 MODENA ME 7.3.1	YES	YES
FIAT IAW MARELLI 4EF/59F/5NF/MULTIJET	YES	YES
FIAT PUNTO BOSCH EDC15C-6 Euro 2/3	YES	YES
HONDA CIVIC BOSCH EDC15C-7	YES	YES
HYUNDAI EDC15C2	YES	YES
ISUZU DTI BOSCH EDC15M	YES	YES
MCC SMART Euro 2/3/4	NO	YES
MCC SMART EDC15C5	YES	YES
MINI BOSCH EDC15 DDE	YES	YES
MERCEDES CDI BOSCH EDC15C5 (29F400)	NO	YES
MERCEDES CDI BOSCH EDC15C6	YES	YES
NISSAN BOSCH EDC15C2	YES	YES
OPEL DTI BOSCH EDC15M	NO	YES
OPEL BOSCH ME 1.5.5	YES	YES
OPEL SIMTEC 70 (1.8 - 2.0)	YES	YES
OPEL SIMTEC 90 (1.6-2.0)	YES	YES
OPEL DELCO 1.7 DTI	YES	YES
OPEL BOSCH M 1.5.5 EURO 2	YES	YES
OPEL DELPHI Z14XE/Z16X6	YES	YES
OPEL IAW MARELLI MULTIJET	YES	YES
ROVER BOSCH EDC15C DDE	YES	YES
RENAULT 1.9 CDI BOSCH EDC15C2	YES	YES
RENAULT DELPHI DCI	YES	YES
RENAULT MARELLI IAW 5NR	YES	YES
VOLVO V40 1.9 EDC15C3	YES	YES

## Compatible car models:

### Alfa Romeo

145 1.4 Bosch M1.5.5  
145 1.6 Bosch M1.5.5  
146 1.4 Bosch M1.5.5  
146 1.6 Bosch M1.5.5  
146 1.8 Bosch M1.5.5  
146 2.0 Bosch M1.5.5  
156 1.6 Bosch M1.5.5  
156 1.8 Bosch M1.5.5  
156 2.0 Bosch M1.5.5  
166 2.0 Bosch M1.5.5  
166 2.0 Bosch M1.5.5  
GTV 1.8 TS 16V Bosch M1.5.5  
GTV 2.0 TS 16V Bosch M1.5.5  
GTV 3.0 TS 16V Bosch M1.5.5  
Spider 1.8 TS Bosch M1.5.5  
Spider 2.0 TS 16V Bosch M1.5.5  
Spider 3.0 TS 16V Bosch M1.5.5  
145 1.9 JTD Bosch EDC15C5  
146 1.9 JTD Bosch EDC15C5  
156 1.9 JTD Bosch EDC15C5  
156 2.4 JTD Bosch EDC15C5  
166 2.4 JTD Bosch EDC15C5  
147 1.9 JTD 16V Bosch EDC15C7  
147 1.9 JTD 8V Bosch EDC15C7

156 1.9 JTD Bosch EDC15C7  
156 2.4 JTD Bosch EDC15C7  
166 2.4 JTD Bosch EDC15C7  
147 1.6 Bosch ME7.3.1  
147 2.0 TS Bosch ME7.3.1  
156 1.6 Bosch ME7.3.1  
156 1.8 Bosch ME7.3.1  
156 2.0 Bosch ME7.3.1  
166 2.0 Bosch ME7.3.1  
166 2.5 Bosch ME7.3.1  
166 3.0 Bosch ME7.3.1  
GTV 2.0 TS 16V Bosch ME7.3.1  
GTV 3.0 TS 16V Bosch ME7.3.1  
Spider 2.0 TS 16V Bosch ME7.3.1  
Spider 3.0 TS 16V Bosch ME7.3.1  
156 2.0 Bosch ME3.1  
166 2.5 V6 24V Bosch ME3.1  
GTV 3.0 V6 24V Bosch ME3.1  
Spider 3.0 V6 24V Bosch ME3.1  
156 2.5 Bosch ME2.1  
166 2.0 V6 Turbo Bosch ME2.1  
166 2.5 V6 24V Bosch ME2.1  
166 3.0 V6 24V Bosch ME2.1

### Audi

A3 1.9 TDi VP37 Bosch EDC15V  
A3 1.9 TDi VP37 Bosch EDC15VM  
A3 1.9 TDi VP37 Bosch EDC15VM-1M  
A4 1.9 TDi VP37 Bosch EDC15V  
A4 1.9 TDi VP37 Bosch EDC15VM  
A4 1.9 TDi VP37 Bosch EDC15VM-1M  
A6 1.9 TDi PD Bosch EDC15P  
A6 1.9 TDi VP37 Bosch EDC15V  
A6 1.9 TDi VP37 Bosch EDC15VM  
A6 1.9 TDi VP37 Bosch EDC15VM-1M  
A2 1.4 TDi PD Bosch EDC15P  
A3 1.9 TDi PD Bosch EDC15P

A4 1.9 TDi PD Bosch EDC15P  
A4 2.5 TDi VP44 Bosch EDC15P  
A6 2.5 TDi VP44 Bosch EDC15P  
A8 2.5 TDi VP44 Bosch EDC15P  
Allroad Quattro 2.5 TDi V6 Bosch EDC15P  
A3 1.8T ME7.5  
A4 1.8T ME7.5  
A6 1.8T ME7.5  
S3 1.8T ME7.5  
TT 1.8T ME7.5  
EDC15VM+

### BMW

Series 3 (E46) 2.0 D (318d) Bosch DDE3.0  
Series 5 (E39) 2.0 D Bosch EDC15  
Series 3 (E36) 2.0 i Siemens MS41  
Series 3 (E36) 2.5 i Siemens MS41  
Series 3 (E36) 2.8 i Siemens MS41  
Series 5 (E39) 2.0 i Siemens MS41  
Series 5 (E39) 2.5 i Siemens MS41  
Series 7 (E38) 2.8i Siemens MS41

Z3 Roadster 2.0 Siemens MS41  
Z3 Roadster 2.8 Siemens MS41  
Series 3 (E46) 3.0 D Bosch DDE4.0  
Series 5 (E39) 2.5 D Bosch DDE4.0  
Series 5 (E39) 3.0 D Bosch DDE4.0  
Series 7 (E38) 3.0 D Bosch DDE4.0  
Series X5 (E53) 3.0 D Bosch DDE4.0  
Series 3 (E36) 2.0i Siemens Ms43

Series 3 (E36) 2.5i Siemens Ms43  
Series 3 (E36) 2.3i Siemens Ms43  
Series 3 (E36) 2.8i Siemens Ms43  
Series 3 (E36) 3.0i Siemens Ms43  
Series 3 (E36) 3.2i Siemens Ms43  
Series 5 (E46) 2.0i Siemens Ms43  
Series 5 (E46) 2.5i Siemens Ms43

Series 5 (E46) 2.3i Siemens Ms43  
Series 5 (E46) 2.8i Siemens Ms43  
Series 5 (E46) 3.0i Siemens Ms43  
Series 5 (E46) 3.2i Siemens Ms43  
Series 3 (E36) 1.8 i Bosch ME5.2.1b  
Z3 Roadster 1.9 Bosch ME5.2.1b

### **Chrysler**

Grand Cherokee 2.7 CRD Bosch EDC15C2  
Jeep Cherokee 2.5 CRD Bosch EDC15C2  
Jeep Cherokee 2.8 CRD Bosch EDC15C2

PT Cruiser 2.2 CRD Bosch EDC15C2  
Voyager 2.5 CRD Bosch EDC15C2

### **Citroen**

Berlingo 2.0 HDI Bosch EDC15C2  
C5 2.0 HDI Bosch EDC15C2  
C5 2.2 HDI Bosch EDC15C2  
C8 2.0 HDI Bosch EDC15C2  
Evasion 2.0 HDI Bosch EDC15C2  
Jumper 2.0 HDI Bosch EDC15C2  
Jumper 2.2 HDI Bosch EDC15C2  
Jumper 2.8 HDI Bosch EDC15C7

Jumpy 2.0 HDI Bosch EDC15C2  
Picasso 2.0 HDI Bosch EDC15C2  
Synergie 2.0 HDI Bosch EDC15C2  
Xantia 2.0 HDI Bosch EDC15C2  
Xsara 2.0 HDI Bosch EDC15C2  
Xsara Picasso 2.0 HDI Bosch EDC15C2

### **Ferrari**

Modena 3.6 Bosch ME7.3H4

### **Fiat**

Bravo/Brava 1.2 Bosch M1.5.5  
Bravo/Brava 1.9 JTD Bosch EDC15C5  
Multipla 1.9 JTD Bosch EDC15C5  
Marea 1.9 JTD Bosch EDC15C5  
Marea 2.4 JTD Bosch EDC15C5  
Punto 1.9 JTD Bosch EDC15C6  
Punto 1.9 JTD Bosch EDC15C7  
Bravo/Brava 1.9 JTD Bosch EDC15C7  
Doblo 1.9 JTD Bosch EDC15C7  
Ducato 2.0 JTD Bosch EDC15C7  
Ducato 2.3 JTD Bosch EDC15C7  
Ducato 2.8 JTD Bosch EDC15C7  
Marea 1.9 JTD Bosch EDC15C7

Marea 2.4 JTD Bosch EDC15C7  
Multipla 1.9 JTD Bosch EDC15C7  
Scudo 2.0 JTD Bosch EDC15C7  
Stilo 1.9 JTD Bosch EDC15C7  
Punto 1.2 Bosch ME7.2.1 Euro2  
Punto 1.2 Bosch ME7.H3  
Stilo 2.4 Bosch ME7.3.1  
Ulysse 2.0 JTD 16V Bosch EDC15C2  
Ulysse 2.2 JTD 16V Bosch EDC15C2  
Bravo/Brava 2.0 Bosch ME7.3.1  
Bravo/Brava 2.0 20V Bosch ME3.1  
Coupe 2.0 20V Bosch ME3.1  
Marea 2.4 MDI 20V Bosch ME3.1

### **Ford**

Galaxy 1.9 TDi PD Bosch EDC15P

### **Honda**

Civic EDC15C-7

### **Hyundai**

Accent 1.5 CRDI Bosch EDC15C2  
Elantra 2.0 CRDI Bosch EDC15C2  
Matrix 1.5 CRDI Bosch EDC15C2

Santa Fe 2.0 CRDI Bosch EDC15C2  
Trajet 2.0 CRDI Bosch EDC15C2

### **Izuzu**

2.0 16V DI Bosch EDC15M

## **Kia**

Carens 2.0 CRDi 16V Bosch EDC15C2  
Sorento 2.5 CRDi Bosch EDC15C2

## **Lancia**

K 2.4 JTD Bosch EDC15C5  
Lybra 1.9 JTD Bosch EDC15C5  
Lybra 2.4 JTD Bosch EDC15C5  
Z 2.0 JTD Bosch EDC15C5  
Lybra 1.9 JTD Bosch EDC15C7  
Lybra 2.4 JTD Bosch EDC15C7  
Thesis 2.4 JTD Bosch EDC15C7

Y 1.2 Bosch ME7.2.1 Euro2  
Y 1.2 Bosch ME7.H3  
Phedra 2.0 JTD Bosch EDC15C2  
Phedra 2.2 JTD Bosch EDC15C2  
Lybra 2.0 Bosch ME7.3.1  
Thesis 2.0 Turbo Bosch ME7.3.1  
Lybra 2.0 i 20V Bosch ME3.1

## **Mini**

Cooper 2.0 D Bosch EDC15C2 DDE

## **Mercedes Benz**

A-Class 1.7 CDI Bosch EDC15C6  
C-Class (W201) 2.2 CDI Bosch EDC15C6  
C-Class (W201) 2.7 CDI Bosch EDC15C6  
C-Class (W203) 2.0 CDI Bosch EDC15C6  
C-Class (W203) 2.2 CDI Bosch EDC15C5  
C-Class (W203) 2.2 CDI Bosch EDC15C6  
C-Class (W203) 2.7 CDI Bosch EDC15C6  
C-Class (W203) 3.2 CDI Bosch EDC15C6  
E-Class (W210) 2.0 CDI Bosch EDC15C6  
E-Class (W210) 2.2 CDI Bosch EDC15C6  
E-Class (W210) 2.7 CDI Bosch EDC15C6  
E-Class (W210) 3.2 CDI Bosch EDC15C6  
G-Class 2.7 CDI Bosch EDC15C6  
G-Class 4.0 CDI Bosch EDC15C6

M-Class 2.7 CDI Bosch EDC15C6  
ML-Class 2.7 CDI Bosch EDC15C6  
ML-Class 4.0 CDI Bosch EDC15C6  
S-Class (W280) 3.2 CDI Bosch EDC15C6  
S-Class (W280) 4.0 CDI Bosch EDC15C6  
V-Class 2.0 CDI Bosch EDC15C6  
V-Class 2.2 CDI Bosch EDC15C6  
Vito 2.2 CDI Bosch EDC15C6  
A-Class 1.7 CDI Bosch EDC15C5  
C-Class (W201) 2.2 CDI Bosch EDC15C5  
M-Class 3.2 CDI Bosch EDC15C  
Sprinter 2.2 CDI Bosch EDC15C  
V-Class 2.2 CDI Bosch EDC15C5  
Vito 2.2 CDI Bosch EDC15C5

## **Nissan**

Almera Tino 2.0 Bosch EDC15C2  
X-Trail 2.2 Bosch EDC15C2

## **Opel**

Vivaro 1.9 16V DI Bosch EDC15C2  
Astra F (4) 1.7 16V DTI Bosch EDC15M  
Astra F (4) 2.0 16V DI Bosch EDC15M  
Astra F (4) 2.2 16V DI Bosch EDC15M  
Astra G 1.7 16V DI Bosch EDC15M  
Astra G 2.0 16V DI Bosch EDC15M  
Frontera 2.2 DTI Bosch EDC15M  
Vectra B 1.7 16V DI Bosch EDC15M  
Vectra B 2.0 16V DI Bosch EDC15M  
Vectra C 2.0 16V DI Bosch EDC15M  
Vectra C 2.0 16V DTI Bosch EDC15M  
Zafira 2.0 16V DI Bosch EDC15M  
Coupe Turbo --- ME1.5.5  
Astra F (4) 1.8 16V Siemens Simtec70  
Astra F (4) 2.0 16V Siemens Simtec70  
Astra G 1.8 16V Siemens Simtec70  
Astra G 2.0 16V Siemens Simtec70

Omega B 2.0 16V Siemens Simtec70  
Vectra B 1.8 16V Siemens Simtec70  
Vectra B 2.0 16V Siemens Simtec70  
Vectra C 1.8 16V Siemens Simtec70  
Vectra C 2.0 16V Siemens Simtec70  
Zafira 1.8 16V Siemens Simtec70  
Zafira 2.0 16V Siemens Simtec70  
Astra F (4) 1.7 16V DTI Delco Y17DT  
Corsa B 1.7 16V Delco Y17DT  
Zafira 1.7 16V Delco Y17DT  
Astra G 1.2 16V Bosch M1.5.5  
Corsa B 1.0 12V Bosch M1.5.5  
Corsa B 1.2 16V Bosch M1.5.5  
Corsa C 1.0 12V Bosch M1.5.5  
Corsa C 1.2 16V Bosch M1.5.5  
Astra F (4) 1.8 16V Siemens Simtec90  
Astra F (4) 2.0 16V Siemens Simtec90

Astra G 1.8 16V Siemens Simtec90  
Astra G 2.0 16V Siemens Simtec90  
Omega B 2.0 16V Siemens Simtec90  
Vectra B 1.8 16V Siemens Simtec90  
Vectra B 2.0 16V Siemens Simtec90  
Vectra C 1.8 16V Siemens Simtec90  
Vectra C 2.0 16V Siemens Simtec90

Zafira 1.8 16V Siemens Simtec90  
Zafira 2.0 16V Siemens Simtec90  
Astra F (4) 1.4 16V Delco  
Astra F (4) 1.6 16V Delco  
Vectra B 1.4 16V Delco  
Vectra B 1.6 16V Delco

### **Peugeot**

206 2.0 HDI Bosch EDC15C2  
306 2.0 HDI Bosch EDC15C2  
307 2.0 HDI 110PS Bosch EDC15C2  
406 2.0 HDI Bosch EDC15C2  
406 2.2 HDI Bosch EDC15C2  
607 2.0 HDI Bosch EDC15C2

607 2.2 HDI Bosch EDC15C2  
807 2.0 HDI Bosch EDC15C2  
807 2.2 HDI Bosch EDC15C2  
Boxer 2.0 HDI Bosch EDC15C2  
Expert 2.0 HDI Bosch EDC15C2  
Partner 2.0 HDI Bosch EDC15C2

### **Renault**

Espace 1.9 dCi Bosch EDC15C2  
Espace 2.2 dCi Bosch EDC15C2  
Kangoo 1.9 dCi Bosch EDC15C2  
Laguna 1.9 dCi Bosch EDC15C2

Megane 1.9 dCi Bosch EDC15C2  
Scenic 1.9 dCi Bosch EDC15C2  
Scenic 1.9 dTi Bosch EDC15C2  
Trafic 1.9 dCi Bosch EDC15C2

### **Rover**

75 2.0 CDT Bosch DDE4.0  
75 Tourer 2.0 CDT Bosch DDE4.0  
Land Rover Freelander 2.0 CDT Bosch DDE4.0

### **Seat**

Alhambra 1.9 TDI VP37 Bosch EDC15V  
Alhambra 1.9 TDI VP37 Bosch EDC15VM  
Alhambra 1.9 TDI VP37 Bosch EDC15VM-1M  
Cordoba 1.9 TDI VP37 Bosch EDC15V  
Cordoba 1.9 TDI VP37 Bosch EDC15VM  
Cordoba 1.9 TDI VP37 Bosch EDC15VM-1M  
Ibiza 1.9 TDI VP37 Bosch EDC15V  
Ibiza 1.9 TDI VP37 Bosch EDC15VM  
Ibiza 1.9 TDI VP37 Bosch EDC15VM-1M  
Leon 1.9 TDI VP37 Bosch EDC15V  
Leon 1.9 TDI VP37 Bosch EDC15VM  
Leon 1.9 TDI VP37 Bosch EDC15VM-1M  
Toledo 1.9 TDI VP37 Bosch EDC15V

Toledo 1.9 TDI VP37 Bosch EDC15VM  
Toledo 1.9 TDI VP37 Bosch EDC15VM-1M  
Alhambra 1.8T ME7.5  
Cordoba 1.8T ME7.5  
Ibiza 1.8T ME7.5  
Leon 1.8T ME7.5  
Toledo 1.8T ME7.5  
Alhambra 1.9 TDI PD Bosch EDC15P  
Cordoba 1.9 TDI PD Bosch EDC15P  
Ibiza 1.9 TDI PD Bosch EDC15P  
Leon 1.9 TDI PD Bosch EDC15P  
Toledo 1.9 TDI PD Bosch EDC15P

### **Skoda**

Fabia 1.9 TDI VP37 Bosch EDC15V  
Fabia 1.9 TDI VP37 Bosch EDC15VM  
Fabia 1.9 TDI VP37 Bosch EDC15VM-1M  
Octavia 1.9 TDI VP37 Bosch EDC15V  
Octavia 1.9 TDI VP37 Bosch EDC15VM

Octavia 1.9 TDI VP37 Bosch EDC15VM-1M  
Octavia 1.8T ME7.5  
Superb 1.8T ME7.5  
Fabia 1.9 TDI PD Bosch EDC15P  
Octavia 1.9 TDI PD Bosch EDC15P

### **Smart**

MCC Smart 0.7 Bosch MEG1.1  
MCC Smart CDI 0.9 CDI EDG15C5

**Volkswagen**

Bora 1.9 TDI VP37 Bosch EDC15V  
Bora 1.9 TDI VP37 Bosch EDC15VM  
Bora 1.9 TDI VP37 Bosch EDC15VM-1M  
Golf 4 1.9 TDI VP37 Bosch EDC15V  
Golf 4 1.9 TDI VP37 Bosch EDC15VM  
Golf 4 1.9 TDI VP37 Bosch EDC15VM-1M  
New Beetle 1.9 TDI VP37 Bosch EDC15V  
New Beetle 1.9 TDI VP37 Bosch EDC15VM  
New Beetle 1.9 TDI VP37 Bosch EDC15VM-1M  
Passat 1.9 TDI VP37 Bosch EDC15V  
Passat 1.9 TDI VP37 Bosch EDC15VM  
Passat 1.9 TDI VP37 Bosch EDC15VM-1M  
Sharan 1.9 TDI VP37 Bosch EDC15V  
Sharan 1.9 TDI VP37 Bosch EDC15VM  
Sharan 1.9 TDI VP37 Bosch EDC15VM-1M  
Sharan 1.8T ME7.

Bora 1.9 TDI PD Bosch EDC15P  
Golf 4 1.9 TDI PD Bosch EDC15P  
Lupo 1.2 TDI PD Bosch EDC15P  
Lupo 1.4 TDI PD Bosch EDC15P  
New Beetle 1.9 TDI PD Bosch EDC15P  
Passat 1.9 TDI PD Bosch EDC15P  
Polo 1.4 TDI PD Bosch EDC15P  
Polo 1.9 TDI PD Bosch EDC15P  
Sharan 1.9 TDI PD Bosch EDC15P  
Passat 2.5 TDI VP37 Bosch EDC15P  
T4 Bus 2.5 TDI VP44 Bosch EDC15P  
Bora 1.8T ME7.5  
Golf 4 1.8T ME7.5  
New Beetle 1.8T ME7.5  
Passat 1.8T ME7.5

**Volvo**

V40 2.0 TDI Bosch EDC15C3